

Unit 3-2 Notes: Skeletal Joints

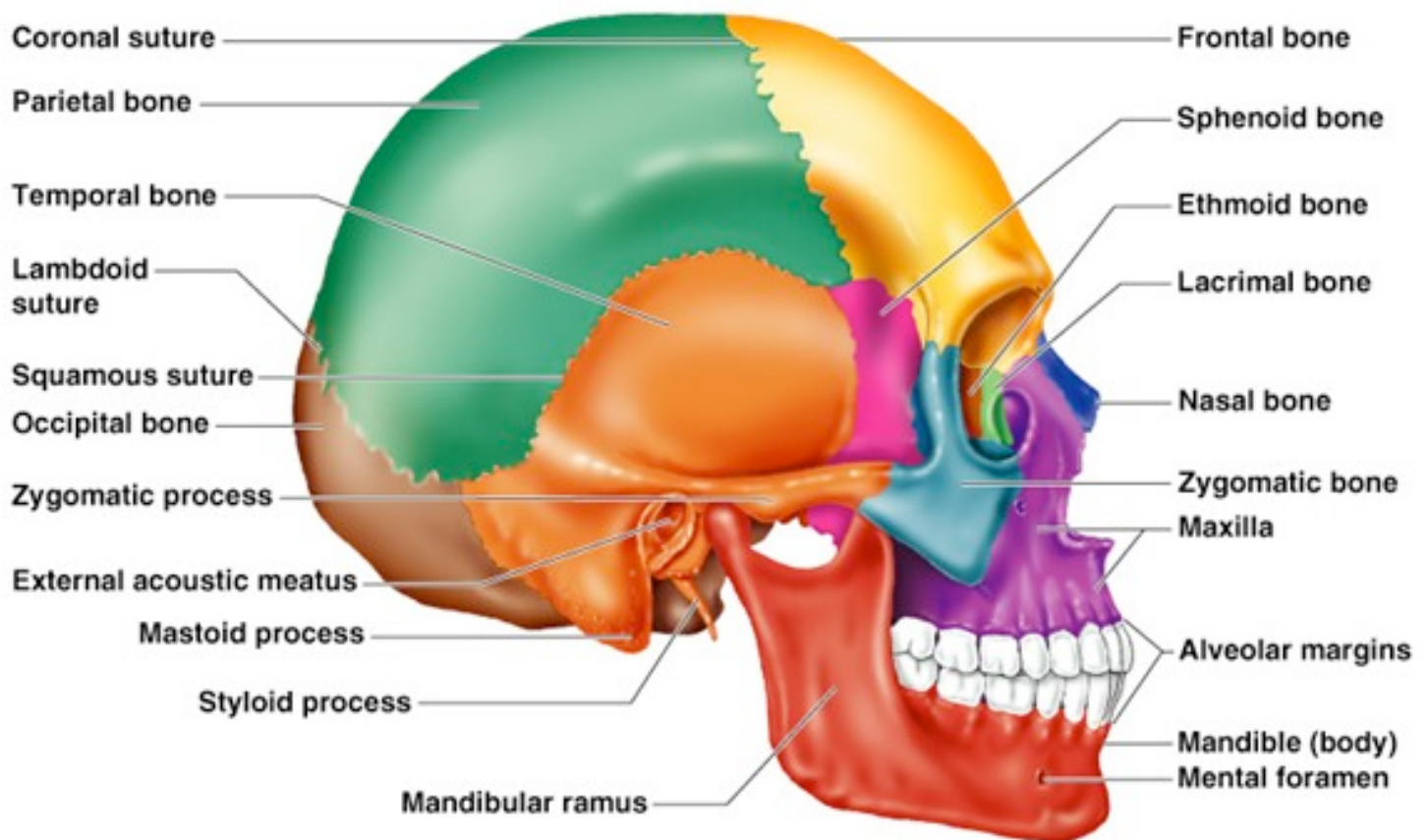
Joint – the _____ between bones, usually one that allows for motion.

*** _____ determines _____

Types of Joints:

1) Immovable – composed of fibrous connective tissue

Example:



2) Gliding – bones sliding against one another

Examples:

3) Hinge – movement in one plane

Examples:

4) Pivot – joint that allows for rotation

Examples:

5) Condylod – joint that allows for movement in two planes

Examples:

6) Saddle – joint that allows for movement in two planes (very similar to condylod)

Examples:

7) Ball and Socket – joint that allows for all movements

Examples: